

## HEATSHRINK LOW VOLTAGE CABLE BREAKOUT

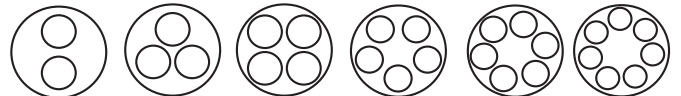
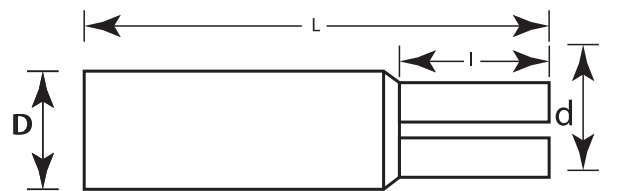
Provide a strong and permanent environmental seal to the crutch of 2,3,4,5,6 and 7 core PVC, XLPE, rubber and PILC cables up to 1.1 KV rated voltage. The brackouts are internally coated with hotmelt adhesive. These breakouts when installed in position provide 100% water/moisture proffness to the system. Customised dimensions of breakouts available on request.

### ENFORCEMENT

For PVC, XLPE, plastic cable & PILC cable to 1.1 KV de voltaje.

### MATERIAL

Made with high quality polyolefin



### PROPERTIES

### VALUE

### STANDAR

#### PHYSICAL

Tensile strength	12 N/mm <sup>2</sup> (Mpa) (min)	ASTM D638
Ultimate elongation	350% (min)	ASTM D638
Density	1.15+0.2 gm/cm <sup>3</sup>	ASTM D792
Hardness	45+ 10 shore D	ASTM D2240
Water absorption	0.5% (max)	ASTM D570

#### THERMAL

Accelerated ageing	(120 °C for 500 hrs.)	ASTM D2671
Tensile strength	11 N/mm (Mpa) (min)	ASTM D638
Ultimate elongation	300% (min)	ASTM D638
Low temperature flexibility	No carcking	ASTM D2671
Heat shock (250°C for 30 mins.)	No cracking, no flow	ESI 09-11
Shrink temperature	125 °C	IEC 216
Continuous temperature limit	-40 to + 100 °C	IEC 216

#### ELECTRICAL

Dielectric strength	15 KV/mm (min)	ASTM D149
Volume resistivity	1x10 <sup>14</sup> Ohm.cm (min)	ASTM D257
Dielectric constant	5 (max)	ASTM D150
Resistant to track & erosion	No tracking, erosion or flame failure upto 3.25 KV for 20 min.	ASTM D2303

# HEATSHRINK LOW VOLTAGE CABLE BREAKOUT

CODE	No. of core	Ds		d		L		I		Tb	Tc
		Ds	Df	Ds	Df	Ls	Lf	Ls	Lf	f+-10%	f+-10%
LV2GBB1565	2	125	65	46	15	110	130	40	55	2.5	2.2
LV2GBB-1565 A	2	150	65	50	15	105	130	40	55	2.5	2.2
LV2GBB-2075	2	175	70	40	20	150	210	60	80	2.5	2.2
LV2GBB-2075 A	2	200	70	55	20	155	210	62	80	2.5	2.2
LV2GBB-24135	2	240	135	65	24	190	245	60	104	2.3	2.0
LV2GBB-55175	2	255	175	86	55	160	200	50	80	2.8	2.5
LV2GBB-55175 A	2	370	175	156	55	150	200	50	80	2.8	2.5

CODE	No. of core	Ds		d		L		I		Tb	Tc
		Ds	Df	Ds	Df	Ls	Lf	Ls	Lf	f+-10%	f+-10%
LV3GBB-0820	3	60	20	25	8	160	184	45	60	3.3	2.7
LV3GBB-0820A	3	70	20	27	8	155	184	40	60	3.3	2.7
LV3GBB-1330	3	80	30	36	13	185	215	60	75	3.6	3.3
LV3GBB-1330A	3	100	30	39	13	185	215	60	75	3.6	3.3
LV3GBB-2145	3	110	45	55	21	200	235	70	88	3.5	2.9
LV3GBB-2145A	3	125	45	57	21	190	230	65	88	3.5	2.9
LV3GBB-2755	3	140	56	68	28	215	260	80	95	3.5	3.9
LV3GBB-2755A	3	180	58	68	29	200	260	75	95	3.5	3.9

CODE	No. of core	Ds		d		L		I		Tb	Tc
		Ds	Df	Ds	Df	Ls	Lf	Ls	Lf	f+-10%	f+-10%
LV4GBB-0825N	4	68	25	25	8	160	188	35	48	3.5	2.3
LV4GBB-1334	4	90	42	35	13	170	210	35	52	3.7	2.6
LV4GBB-2454	4	125	44	40	14	170	208	30	51	3.7	2.6
LV4GBB-4080	4	180	80	70	40	200	260	75	95	3.7	2.8
LV7GBB-0737	7	95	37	26	7	100	135	40	55	2.7	2.6

D,d : Internal Diameter ; s : as supplied ; f : after free recovery ; Tb,Tc : Thickness of body & core